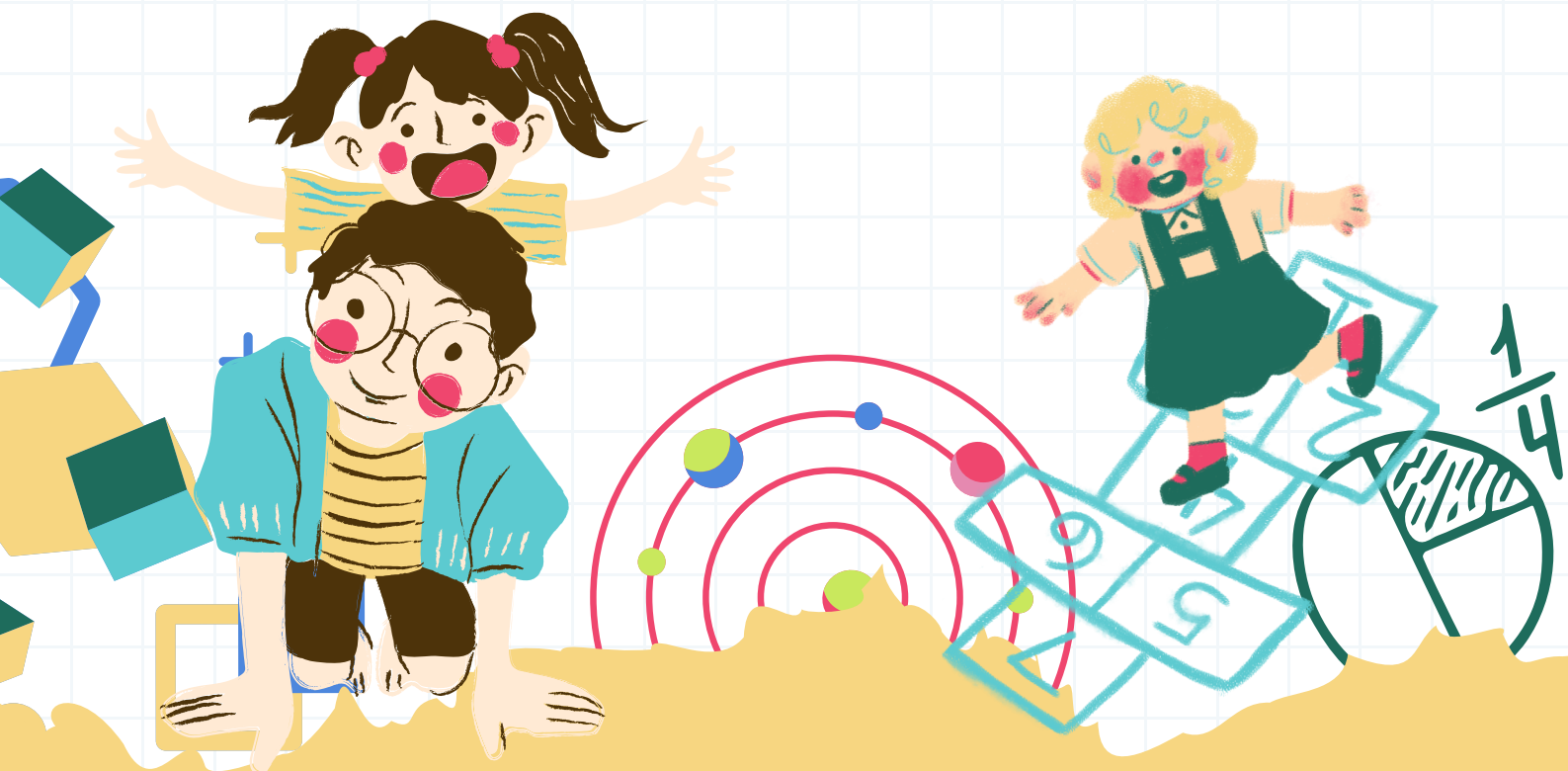


MATH&MOVE

PRACTICE SHEET

Venn diagrams



TOPIC: Data evaluation and categorisation

DURATION: 30- 45 mins

LEVEL: 1 (ages 6-7)

PARTICIPANTS: Entire class

Note: For older pupils, this activity can be carried out in pairs (2 pupils working together with the rest of the class observing)

Required material for this activity

- 1** 1 chalk for drawing the 2-circled Venn diagram on the ground
 - Alternatively: 1 pair of scissors and 1 ball of string/yarn if the teacher can't use chalk to make the diagram
- 2** 3 cards with labels – “Eats meat”, “Eats plants/vegetables” and “Eats meat and plants/vegetables”.
- 3** Cards with the names of animals on them, corresponding to the number of pupils in the class
- 4** 1 hat or box for placing the cards



INSTRUCTION AND DESCRIPTION OF THE ACTIVITY

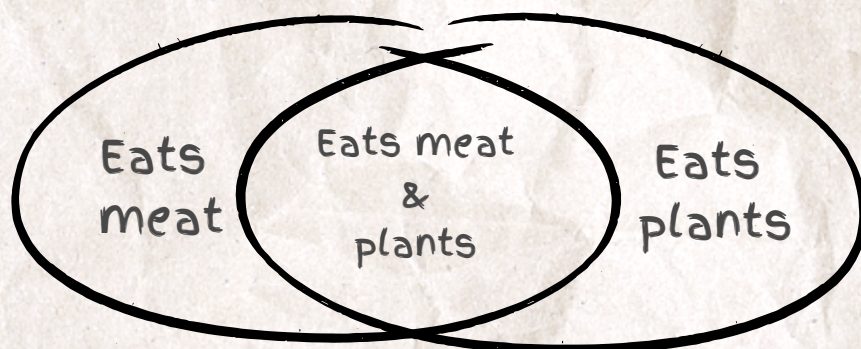
Instruction

Learn about what a Venn diagram is by placing different 'animals' inside the two circles on the floor. One group will be playing the part of the animals by using just their bodies and faces to act out their animal's movements and feelings, and the other group will be guessing which animal it is and which circle it belongs to. Continue playing like this until you've guessed all animals correctly and put them in the right circle!



Observe the floor of the teaching area and notice the two circles, and how they join in the middle making three different sections. Read along with your teacher the names of each section: "Eats meat", "Eats plants/vegetables" and "Eats meat and plants/vegetables". These circles make up a Venn diagram and the one on the floor is describing the eating habits of animals.

Divide into two groups – the animals (pupils acting as animals) and the guessers (pupils guessing the animals and placing them in the right section of the Venn diagram).



2

If you are a member of the 'animal' group, draw a slip of paper given to you by the teacher. That's the animal you need to keep secret and act out! Use your body and face to imitate the animal – no talking and making noises! If you are a member of the 'guesser' group, you need to figure out which animal is being acted out. If you can't guess correctly right away, ask your teacher for hints about the animal's size, habitat colour, etc.



3

Once the animal has been guessed correctly, it's time for the 'guesser' group to ask themselves: Does this animal eat meat? Does this animal eat plants/vegetables? Or does this animal eat both meat and plants/vegetables? Make a decision with your group and then direct the 'animal' to the correct section of the Venn diagram, marked by a label for meat, plants/vegetables or both. Continue like this until the entire animal group has been sorted into the Venn diagram.

FINAL STEP



Now that the group of 'animal' actors have been placed in the Venn diagram, count how many animals eat meat, plants/vegetables and how many eat both. Discuss how the eating habits of the animals are the same and different, for example: a lion eats meat and a cow eats vegetables, but a bear eats both meat and vegetables!